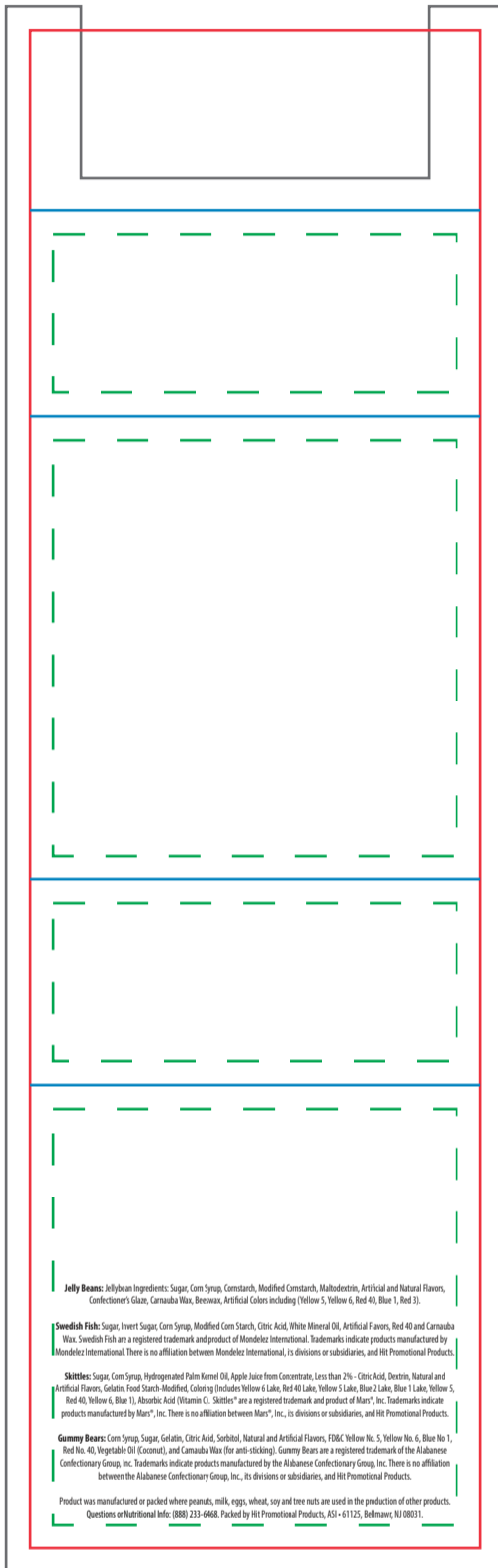


Art Approval Form

Client: XXXX
Invoice #: XXX

Imprint size: 8"H x 2.375"W



- — Safe Area
- — Artwork Bleed
- — Cut Line
- — Fold/Crease Line

Jelly Beans: Jellybean Ingredients: Sugar, Corn Syrup, Cornstarch, Modified Cornstarch, Malodestric, Artificial and Natural Flavors, Confectioner's Glaze, Carnauba Wax, Beeswax, Artificial Colors including (Yellow 5, Yellow 6, Red 40, Blue 1, Red 3).

Sweetish Fish: Sugar, Invert Sugar, Corn Syrup, Modified Corn Starch, Citric Acid, White Mineral Oil, Artificial Flavors, Red 40 and Carnauba Wax. Swedish Fish are a registered trademark and product of Mondelez International. Trademarks indicate products manufactured by Mondelez International. There is no affiliation between Mondelez International, its divisions or subsidiaries, and HI Promotional Products.

Skitelles: Sugar, Corn Syrup, Hydrogenated Palm Kernel Oil, Apple Juice from Concentrate, Less than 2% - Citric Acid, Dextrose, Natural and Artificial Flavors, Gelatin, Food Starch-Modified, Coloring (Includes Yellow 6 Lake, Red 40 Lake, Yellow 5 Lake, Blue 2 Lake, Blue 1 Lake, Yellow 5, Red 40, Yellow 6, Blue 1), Monoic Acid (Vitamin C). Skittles® are a registered trademark and product of Mars®, Inc. Trademarks indicate products manufactured by Mars®, Inc. There is no affiliation between Mars®, Inc., its divisions or subsidiaries, and HI Promotional Products.

Gummy Bears: Corn Syrup, Sugar, Gelatin, Citric Acid, Sorbitol, Natural and Artificial Flavors, FD&C Yellow No. 5, Yellow No. 6, Blue No. 1, Red No. 40, Vegetable Oil (Ecomul), and Carnauba Wax (for anti-sticking). Gummy Bears are a registered trademark of the Alabamase Confectionery Group, Inc. Trademarks indicate products manufactured by the Alabamase Confectionery Group, Inc. There is no affiliation between the Alabamase Confectionery Group, Inc., its divisions or subsidiaries, and HI Promotional Products.

Product was manufactured or packed where peanuts, milk, eggs, wheat, soy and tree nuts are used in the production of other products.
Questions or Nutritional Info: (888) 233-4468. Packed by HI Promotional Products, 431-61125, Belmar, NJ 08031.

ITEM COLOR

XXXX

IMPRINT COLOR

XXXX

ITEM

AA-ZIT-JOVJ

DESCRIPTION

weet Box Medley - Chocolate Covered Almonds, Mixed Nuts, Chocolate Espresso Beans, Peanuts

IMPRINT TYPE

Full Color

Art Guidelines

- Positive Imprint – 6 pt Minimum..... Sample
- Negative Imprint – 8 pt Minimum..... Sample
- Serif & Italic Types – 10 pt Minimum..... Sample Sample
- Line Weight, Positive Lines – .5 pt Minimum —————
- Line Weight, Negative Lines – .75 pt Minimum —————
- Registered or Trademark Symbols – 8 pt Width Minimum ®
TM

Ornate and display type faces will be printed on a case-by-case basis.

Registration marks and trademarks will be enlarged to ensure minimal size when printed.

Color & Size Variance

All PMS colors are printed in RGB and only near tonal value can be achieved

- This PDF file is being viewed on an RGB monitor therefore there will be a variance between the color on your screen and the color of the actual finished product.
- All PMS Colors are printed CMYK and are matched as close as possible.
- This proof should be used to inspect the layout, spelling, grammar, color selection and color appearance of your order
- Colors printed on different mediums (ie: caps/leash and label) will not be an exact match.
- This proof is not an exact match of the finished product color or quality of the printed piece.

By agreeing to this proof you agree to the terms and conditions stated on www.pmgoo.com

PROOF BY

XXX